

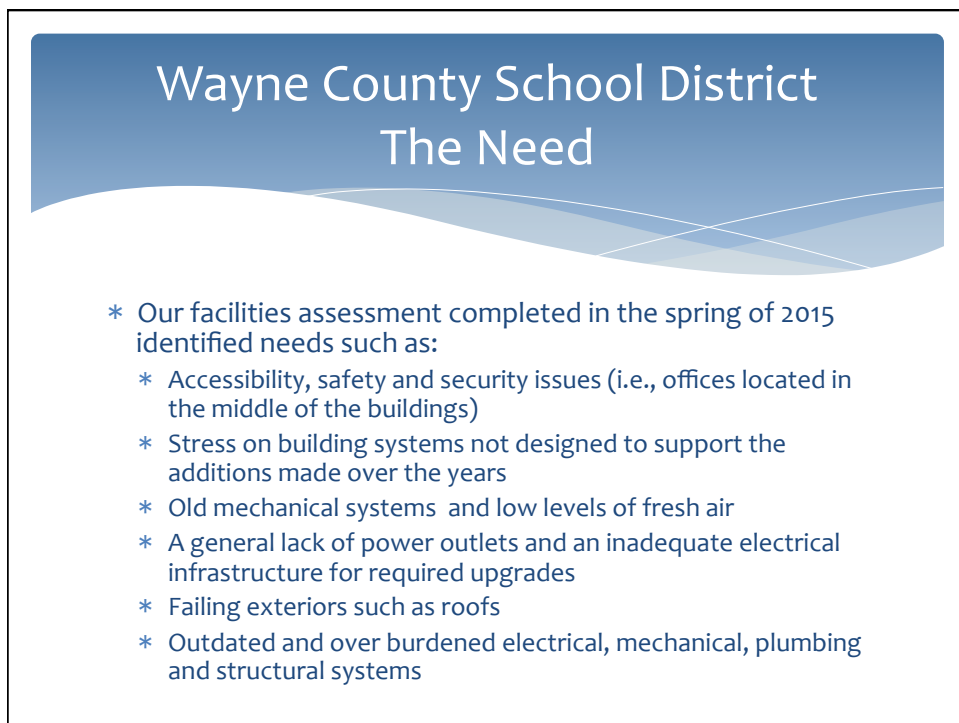
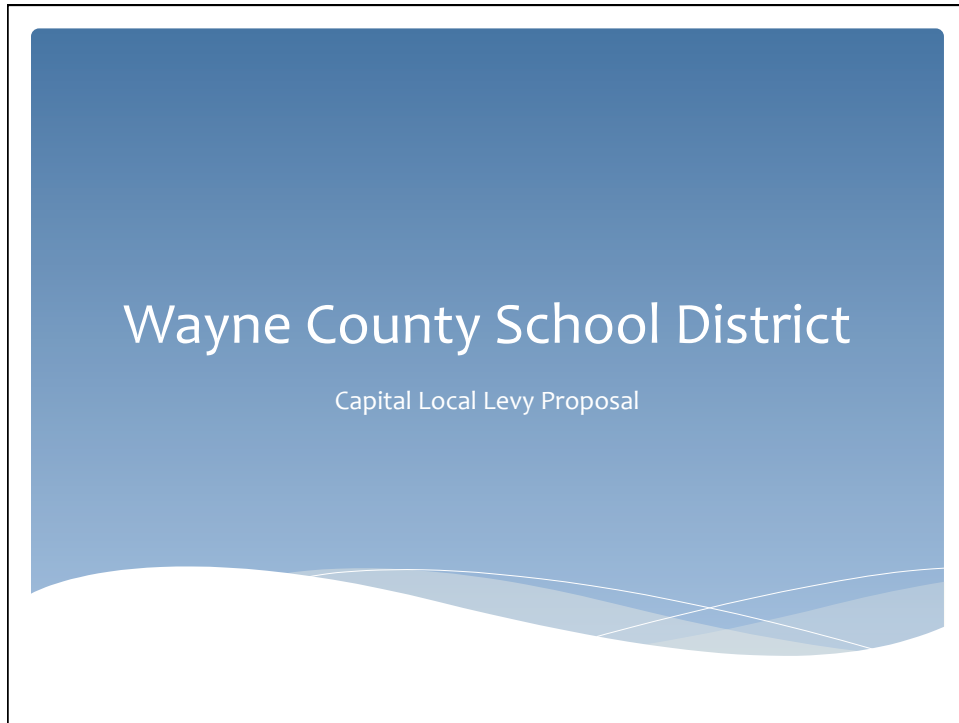
Wayne County School District Summary of Proposed Changes

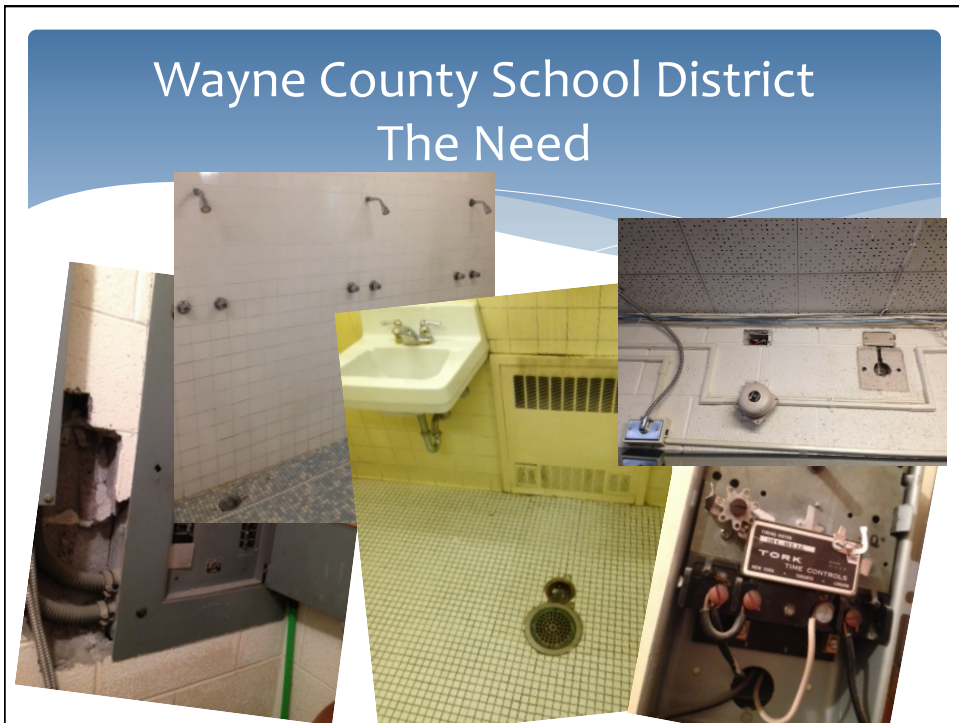
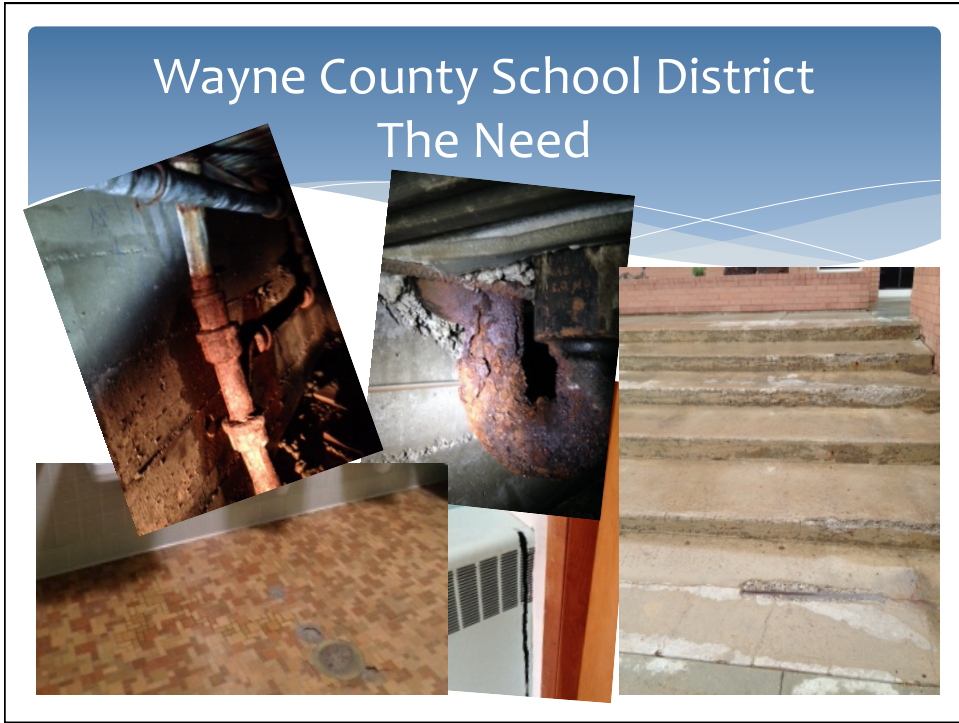
- | | |
|--|---|
| <ul style="list-style-type: none"> * Capital Local Levy <ul style="list-style-type: none"> * Assessed by the board and subject to truth-in-taxation requirements, available for school year 2015-2016 * Used for facility construction, major improvements, and large equipment * The state cap's the rate and we are currently at about 13% of the cap, with the increased rate we would be at about 38% of the cap | <ul style="list-style-type: none"> * Voted Local Levy <ul style="list-style-type: none"> * Must be approved by a majority vote in the November election, available for school year 2016-2017 * Used for "Maintenance and Operations" (M&O), i.e., instruction and support services * State guarantee program available to make our local dollars go further * We currently have no Voted Local Levy, but if the vote is passed we would be at about 37% of the cap |
|--|---|

Wayne County School District Summary of Proposed Changes

	Capital Local Levy	Voted Local Levy	Combined
Current rate	0.000394	-	
Proposed rate increase	0.000748	0.000748	0.001496
Total new rate	0.001142	0.000748	
Expected increased tax revenue to the district	217,893	222,251	440,144
Expected state guarantee match	-	109,238	109,238
Approximate annual increase on a \$150,000 fair value primary residence**	61.71	61.71	123.42
Approximate annual increase on a \$150,000 fair value business or secondary residence**	112.20	112.20	224.40

**Remember, if the Voted Local Levy passes you would add the increases together.





Wayne County School District The Solution – Capital Local Levy

- * Raising additional capital funds is the first step in the solution.
- * A Capital Local Levy is a state supported program which would provide additional funds for the capital efforts of the school district via a local property tax levy.

Wayne County School District The Solution – Capital Local Levy

	Capital Local Levy
Current rate	0.000394
Proposed rate increase	0.000748
Total new rate	0.001142
<hr/>	
Current tax revenue to the district (approx)	139,000
Existing state guarantee	100,000
Current annual revenues	239,000
Expected increase in tax revenue to the district	217,893
Expected annual revenues	456,893
Anticipated annual expenses for necessary repairs	150,000
Money to be put toward future building projects each year	306,893
<hr/>	
Approximate annual increase on a \$150,000 fair value primary residence	61.71
Approximate annual increase on a \$150,000 fair value business or secondary residence	112.20

Wayne County School District The Solution – Capital Local Levy

Year	Principal	Interest	Total Debt Service
1	295,000	296,971	591,971
2	300,000	286,021	586,021
3	305,000	274,884	579,884
4	310,000	263,562	573,562
5	320,000	252,055	572,055
6	330,000	240,176	570,176
7	340,000	227,926	567,926
8	350,000	215,304	565,304
9	365,000	202,312	567,312
10	385,000	188,762	573,762
11	405,000	174,471	579,471
12	415,000	159,437	574,437
13	425,000	144,031	569,031
14	440,000	128,255	568,255
15	460,000	111,921	571,921
16	475,000	94,845	569,845
17	490,000	77,213	567,213
18	510,000	59,023	569,023
19	530,000	40,091	570,091
20	550,000	20,417	570,417
	8,000,000	3,457,676	11,457,676

* Because of financing costs, the total amount repaid on an \$8 million GO bond would be approximately \$11.5 million. (Rates are based on current market and figures provided by Zion’s Bank).

Wayne County School District The Solution – Capital Local Levy

Year	Savings	Earned Interest	Total Debt Service
-5	300,000	1,661	
-4	300,000	3,332	
-3	300,000	5,002	
-2	300,000	6,673	
-1	300,000	8,344	
Year	Principal	Interest	Total Debt Service
1	220,000	240,361	460,361
2	225,000	232,195	457,195
3	230,000	223,842	453,842
4	235,000	215,304	450,304
5	245,000	206,581	451,581
6	255,000	197,486	452,486
7	265,000	188,020	453,020
8	275,000	178,183	453,183
9	290,000	167,974	457,974
10	310,000	157,209	467,209
11	330,000	145,702	475,702
12	340,000	133,452	473,452
13	350,000	120,830	470,830
14	365,000	107,838	472,838
15	385,000	94,288	479,288
16	400,000	79,997	479,997
17	415,000	65,148	480,148
18	435,000	49,743	484,743
19	455,000	33,595	488,595
20	450,000	16,705	466,705
	6,475,000	2,854,453	9,329,453
Interest Savings % of total project		603,223 7.5%	

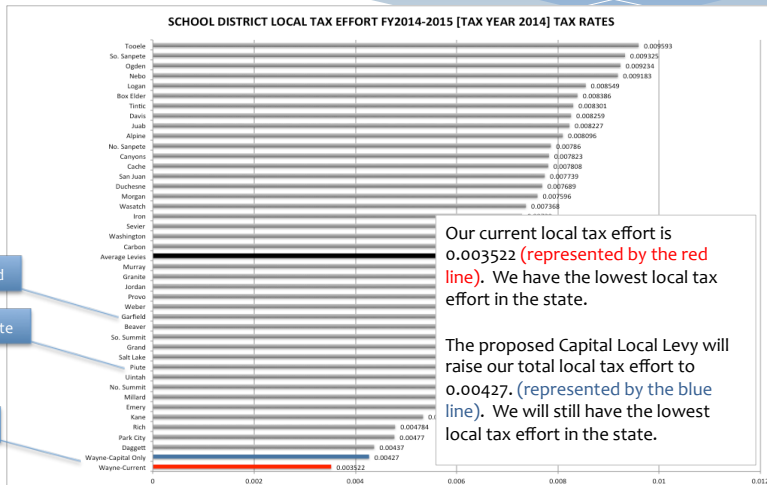
- * If we can set aside \$300,000 per year over the next five years, we would save over \$600,000 total on an \$8 million project.
- * When we get financing in the future, we would be able to use the current increase against the debt payment so our Bond Levy would not be as high.
- * Note – this is strictly for illustration purposes. No decisions have been made at this point as to future projects or the estimated costs of such projects.

Wayne County School District The Tax Impact – Capital Local Levy

- * Primary residence:
 - * The property valuation is reduced by 45%. So your calculation is:
Assessed property value x .55 x .000748 = approximate increase in tax.
- * Business or secondary residence:
 - * Your calculation is: assessed property value x .000748 = approximate increase in tax.

Levy	Rate	Estimated additional annual tax					
		Primary Residence			Business or Secondary Residence		
		Fair Value \$75,000	Fair Value \$150,000	Fair Value \$250,000	Fair Value \$75,000	Fair Value \$150,000	Fair Value \$250,000
Capital Levy Increase	0.000748	30.86	61.71	102.85	56.10	112.20	187.00

Wayne County School District The Tax Impact – Capital Local Levy



Wayne County School District Capital Local Levy Proposal

- * Please pickup the handouts provided. There is information available on the website as well as at the district offices.
- * Although we don't have to go to vote on this proposal, we would like the support of the public in our decision. The school board and administrators make the best decisions we can for our students but need your support when we have to make such significant decisions that affect each one of us.
- * Questions?
 - * Feel free to contact us after the meeting also.

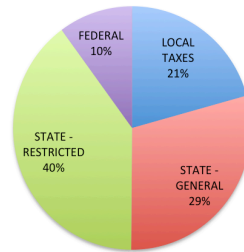
Wayne County School District

Voted Local Levy Proposal

Wayne County School District The Need

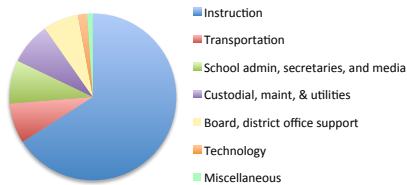
- * Our school district relies heavily on state and federal funding.
- * State funding is based in part on student enrollment.
 - * Since 2010 total enrollment has dropped by 80 students or 15% of our student population.
 - * Declining enrollment can result in fewer options for students, particularly in our secondary schools.

SOURCES OF REVENUE
(FY15 estimate, not final)



Wayne County School District The Need

MAINTENANCE AND OPERATIONS (M&O) EXPENDITURES
(FY15 estimate, not final)



- * A significant part of our state funding and most of our federal funding is restricted to particular uses or programs.
- * Instruction is our most significant expense: over 65% of our expenditures for 2015.
- * We need revenue not restricted to specific programs in order to provide funding for operations, including technology support, custodial and maintenance services, and transportation for our students.
- * Revenue from our local property taxes is a significant source for these funds.

Wayne County School District The Solution – Voted Local Levy

- * The Voted Local Levy is a state-supported program that can provide an additional source of annual revenue for the school district, generated from local property taxes.
 - * Funds must be used for Maintenance and Operations (M&O), which would include instructional and support services, transportation, technology, and other district needs.
- * We are currently one of only five school districts in the state of Utah with no Voted Local Levy.
 - * The other four are: Daggett, Grand, Morgan, Uintah (2014-2015 school year).
 - * There are currently 42 school districts in the state.

Wayne County School District The Solution – Voted Local Levy

	Voted Local Levy
Current rate	-
Proposed rate increase	0.000748
Total new rate	0.000748
Expected tax revenue to the district	222,251
Expected state guarantee match	109,238
Total new revenue to the district	331,489

For every \$2 of local taxes increased the state is providing over \$1 in guarantee!

- * In addition to the estimated tax revenue generated by the local tax increase, the state offers a guarantee program based on enrollment and the rate set by the board. By raising \$222,251 locally, we get a 'bonus' of \$109,238 from the state for passing the Voted Board Levy. The total increase in new revenue to the district would be \$331,489.

Wayne County School District The Solution – Voted Local Levy

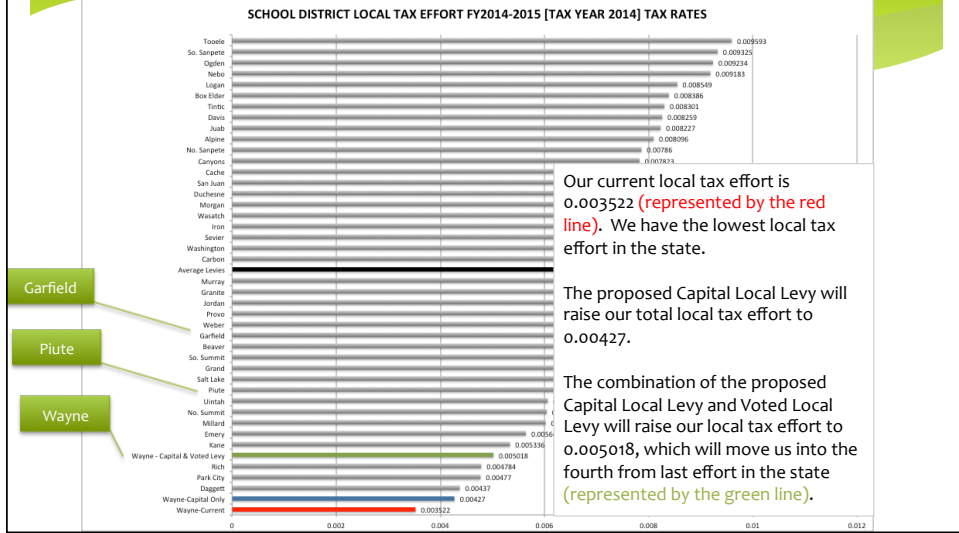
- * District priorities for increased Maintenance & Operations (M&O) revenue:
 - * Replace the business teacher at the high school
 - * Restore the administrator at the middle school
 - * Hire additional technology support for the students and teachers
 - * Restructure instructional offerings at secondary schools
 - * Help defray minor facilities improvement costs so we can save capital funds (for new school)
 - * Continue to be able to provide annual employee raises
 - * Currently our district has one of the lowest pay rates in the state and we would like to move out of this position so we can attract and retain top talent in all areas
 - * Improve technology infrastructure to provide greater access to materials in all schools.

Wayne County School District The Tax Impact – Voted Local Levy

- * Primary residence:
 - * The property valuation is reduced by 45%. So your calculation is:
Assessed property value x .55 x .000748 = approximate increase in tax.
- * Business or secondary residence:
 - * Your calculation is: assessed property value x .000748 = approximate increase in tax.

		Estimated additional annual tax					
		Primary Residence			Business or Secondary Residence		
		Fair Value \$75,000	Fair Value \$150,000	Fair Value \$250,000	Fair Value \$75,000	Fair Value \$150,000	Fair Value \$250,000
Levy	Rate						
Voted Local Levy	0.000748	30.86	61.71	102.85	56.10	112.20	187.00

Wayne County School District The Tax Impact – Capital Local Levy



Wayne County School District Voted Local Levy Proposal

- * Please pickup the handouts provided. There is information available on the website as well as at the district offices.
- * Please vote Tuesday, November 3, 2015.
- * Questions?
 - * Feel free to contact us after the meeting also.